

AFRICAN VIEW

Tanzania

Your host
*from the
mountains
to the coast*

Stay in our lodges and tented camps and enjoy a perfect holiday in Tanzania.

AFRICAN VIEW LODGE

Arrive in Africa and embark on a safari to Arusha National Park or, sign up for a trekking tour to Kilimanjaro or Mt Meru.

MKOMAZI VIEW CAMP

Visit the black rhinos in this scenically beautiful national park and enjoy relaxing at our intimate tented camp.

SERENGETI VIEW CAMPS

Relax and breathe in the real bush experience as the game pass by whilst the lions keeps watch.

TARANGIRE VIEW TENTED LODGE

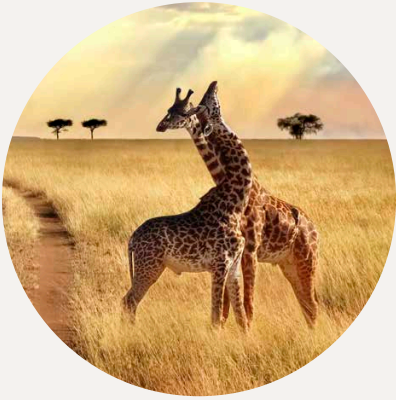
Enjoy the comforts of our tented lodge in the heart of this national park famous for its elephants.

A woman with blonde hair is relaxing in a brown hammock, smiling. The hammock is suspended from a large tree with green leaves. A man in a dark t-shirt, khaki shorts, and a cap stands to the right, looking towards the woman. The background is a savanna landscape with dry grass, scattered trees, and a clear blue sky with some clouds. The overall scene is peaceful and scenic.

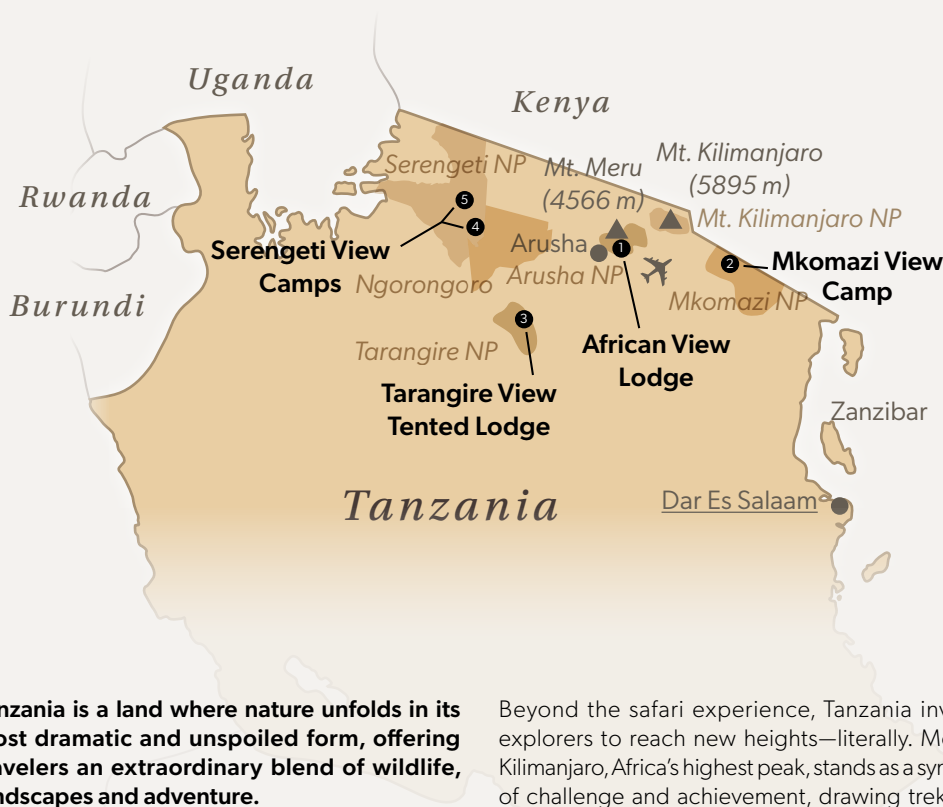
Welcome to
AFRICAN VIEW

LODGES & TENTED CAMPS

ARUSHA · TARANGIRE · MKOMAZI · SERENGETI



Explore the Northern Circuit



Tanzania is a land where nature unfolds in its most dramatic and unspoiled form, offering travelers an extraordinary blend of wildlife, landscapes and adventure.

At the heart of this experience lies the renowned Northern Circuit, a collection of iconic national parks that, together, create one of the most spectacular safari routes in the world.

From the vast plains of the Serengeti, where the Great Migration thunders across the horizon, to the breathtaking Ngorongoro Crater, a natural amphitheater teeming with life, this region captures the essence of Africa's wild beauty.

Tarangire National Park enchants with its ancient baobab trees and large elephant herds, while Lake Manyara offers a striking contrast with its lush forests and shimmering waters.

Beyond the safari experience, Tanzania invites explorers to reach new heights—literally. Mount Kilimanjaro, Africa's highest peak, stands as a symbol of challenge and achievement, drawing trekkers from around the globe to its snow-capped summit. Nearby, Mount Meru provides a quieter yet equally rewarding trekking experience, with rich wildlife encounters and sweeping views of the surrounding landscape.

Together, these adventures form a journey that is as diverse as it is unforgettable, making Tanzania a destination that truly speaks to the spirit of exploration.

Deborah Bachmann

CEO



WILDLIFE OBSERVATION

Elephant, Lion, Leopard, Giraffe, Rhino, Buffalo, Zebra, Wildebeest, ...



BEST TIME TO TRAVEL

June- September



BEST WAY TO GET AROUND

Guided tour from park to park



AVERAGE STAY

12 - 18 Days



ARRIVAL

Kilimanjaro International Airport (JRO)
(38 km by car to African View Lodge)



CONTACT US

African View (T) Ltd.
P.O. Box 179, Usa River
Momella Road, Tanzania
+255 784 419 232
info@africanview.co.tz
www.african-view.com

Jambo at African View Lodge

Lying at the foot of Mount Meru with stunning views of the mountain you will find our African View Lodge.

This charming little lodge has 23 en-suite rooms with breathtaking views of Mount Meru. The reception, dining room and bungalows have been designed using local materials including Meru-styled ceilings which are covered with banana leaves.

Perched on the lush slopes near Mount Meru, African View Lodge is more than just a place to stay—it is a warm expression of Tanzanian hospitality. Guests are welcomed like family, greeted with genuine smiles and a sense of belonging that defines every moment of their stay.

The lodge places strong emphasis on sustainability and community. Fresh ingredients are sourced directly from local farms, bringing seasonal flavors to the table while supporting nearby growers. Many herbs and vegetables even come from the lodge’s own garden, ensuring both quality and minimal environmental impact.

Commitment to renewable energy is visible throughout the property, with solar power playing a key role in daily operations. This mindful approach reduces the ecological footprint while maintaining comfort for guests.

Equally remarkable is the lodge’s dedication to its staff. Many employees have been part of the team for years, creating a familiar and heartfelt atmosphere that guests immediately notice. Their experience and passion embody the spirit of sustainable tourism—authentic, responsible, and deeply connected to the local community.



Reception



Dining area



Bungalows | The bungalows are all arranged around the pool and not far from the dining house.





Family Cottage



Treetop Tent



Pool area | The tropical garden with its 16m long infinity pool as centre piece offers a cooling plunge, especially during the hot months.



Massage Room



Sundowner deck

In the evenings, whilst enjoying a sundowner on our "Meru View platform" to round off the day, our chefs will be busy preparing tasty meals made with fresh ingredients straight from the markets. We look forward to hosting you in our own little piece of paradise.

BUNGALOWS

The 10 charming bungalows have 20 en-suite rooms with breathtaking views of Mount Meru. Each room has been allocated a Tanzanian theme so, within one lodge, we offer a small tour around Tanzania with a brief insight into, for example, 'Lake Tanganyika', the 'Maasai' and 'Kilwa Ruins' as well as 'Serengeti' and 'Kilimanjaro'.

FAMILY COTTAGE

Welcome to our spacious family cottage! The two comfortable rooms en-suite can accommodate up to five people and have spacious beds for a restful night's sleep. The en-suite bathrooms guarantee privacy and convenience. You can also enjoy your own terrace where you can relax and enjoy the picturesque surroundings. This cottage is ideal for families or close-knit groups who want to experience moments together in a peaceful atmosphere.

TREETOP TENT

For those who do not have time to do a safari, we even have our own special 'Tree House', which is a permanent en-suite tent elevated amongst the trees in the garden.



Dining area

Our lodge is the perfect base to start your climbing trips to Mount Meru and Kilimanjaro

Nestled in lush gardens near Mount Meru, African View Lodge offers a generous and tranquil setting that invites guests to slow down and recharge. The spacious grounds feature a relaxed beer garden, a welcoming barbecue area for social evenings, and a refreshing swimming pool surrounded by greenery. One of the highlights is the sundowner deck, where guests can take in sweeping views and enjoy the golden glow of the African sunset.

It is the perfect place to unwind after the challenge of a Kilimanjaro or Mount Meru trek, offering comfort, fresh air, and a sense of calm. At the same time, the lodge serves as an ideal starting point for safaris into Tanzania's famous Northern Circuit, with its iconic national parks just within reach. Here, relaxation and adventure blend seamlessly.



Barbeque area

Reaching Africa



PICK UP FROM KILIMANJARO AIRPORT

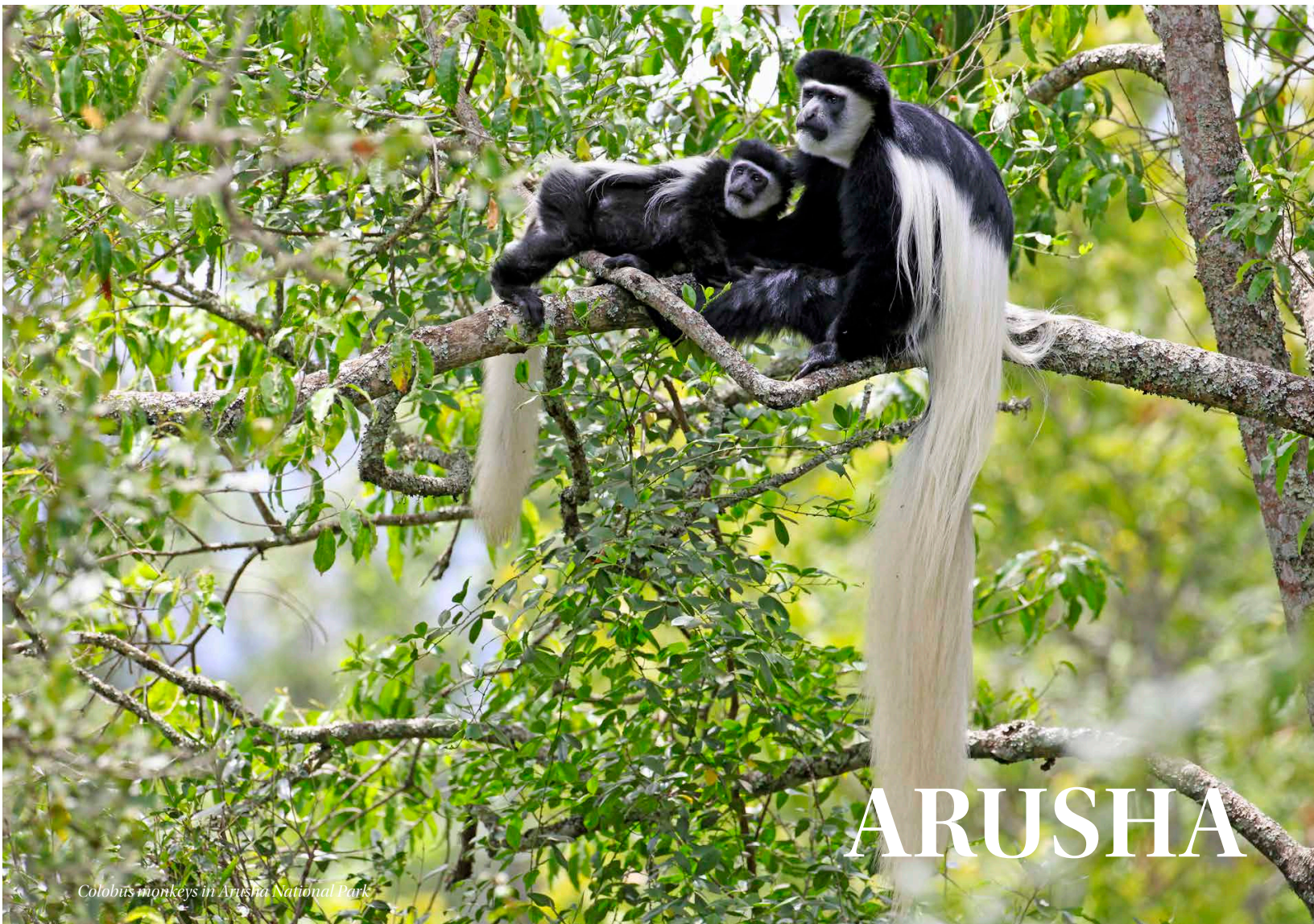
We offer all guests an airport transfer to the Lodge. The airport is only 38 km away.

WELCOME TO AFRICAN VIEW LODGE

We endeavor to make everything possible for you to have a pleasant stay

START YOUR SAFARI OR TREKKING

Our team is available for you to help you plan your daily excursions or trips.



Colobus monkeys in Arusha National Park

Three Must Do's in and around Arusha National Park



BUSH WALK

Experience how your senses of smell, hearing and sight intensify when you take a walk on the wild side with an armed ranger at your side.



COFFEE WALK

Visit a coffee farm where an explanation on how coffee is grown, harvested and processed followed by a traditional hot lunch served under a shady tree.



CANOEING

Both Lake Momella in Arusha National Park and Lake Duluti (crater lake) which is located in a forest reserve with a circuit walking trail offer canoeing opportunities.

Arusha National Park, near Arusha in northern Tanzania, is a lesser-known gem with diverse landscapes dominated by the horseshoe-shaped crater of Mount Meru, the country's second-highest peak.

Visitors can enjoy guided game walks with armed rangers or game drives around the Momella Lakes and Ngurdoto Crater. The Momella Lakes are alkaline and fed by underground streams, each showing different green hues due to minerals and algae. They attract many water birds, including flamingos and Egyptian geese, while nearby plains host zebras and waterbucks with impressive horns.

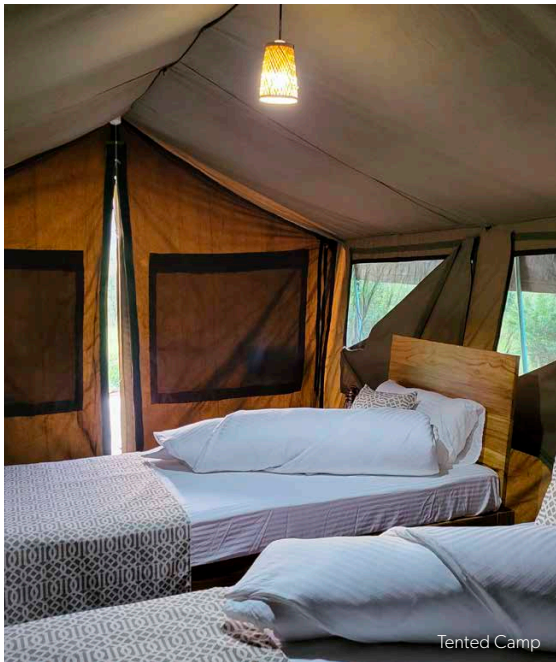
On clear mornings, Mount Kilimanjaro is visible, though Mount Meru defines the park's skyline. Rising to 4,566 m, it offers a challenging but rewarding climb through grasslands, rainforest, and moorland to a dramatic crater rim, with stunning views across the landscape.



The mobile tented camp, with only 8 furnished en-suite tents, is situated in the north-western parts surrounded by rolling hills. It is located on a slope with views across Watershed Valley, popular with eland, zebras, giraffe, elephant and Bohor reedbuck. The prolific variety of birdlife is well known among birding specialists



Elephant in Mkomazi National Park



Tented Camp

Mkomazi View Camp

The camp is situated near the new Mbula Rhino Sanctuary and Dindira Dam.



View from guest tent



Mbula Rhino Sanctuary

In the remote wilderness of Mkomazi National Park, Mkomazi View Camp by African View Lodge offers an intimate safari experience far from the usual routes. Opened in January 2021, the camp sits on a gentle slope amid rolling hills, overlooking the vast Watershed Valley. Guests can spot wildlife such as eland, zebras, giraffes, elephants, and Bohor reed-buck, often directly from their private terrace.

With just eight comfortably furnished tents, each featuring a private outdoor shower, the camp ensures a peaceful and exclusive atmosphere. The design blends seamlessly into nature, combining rustic charm with thoughtful comfort. Natural materials, soft tones, and open views create a sense of harmony with the surroundings, allowing guests to feel fully immersed without sacrificing relaxation. Evenings are spent under star-filled skies, accompanied by the distant sounds of wildlife.

Mkomazi is also a hidden gem for birding enthusiasts, known for its remarkable diversity of species that attract experts and nature lovers alike. Guided walks and game drives reveal not only the larger mammals but also the intricate eco-systems that make this park so unique. Unlike the busier parks of the Northern Circuit, Mkomazi offers a rare sense of solitude and exclusivity.

Staying at Mkomazi View Camp is about more than just wildlife viewing—it is about experiencing one of Tanzania's most untouched ecosystems. The quiet, the vastness, and the authenticity of the landscape create a safari that feels deeply personal, where nature sets the pace and every moment becomes truly unforgettable.



Mess tent

Rhino watching

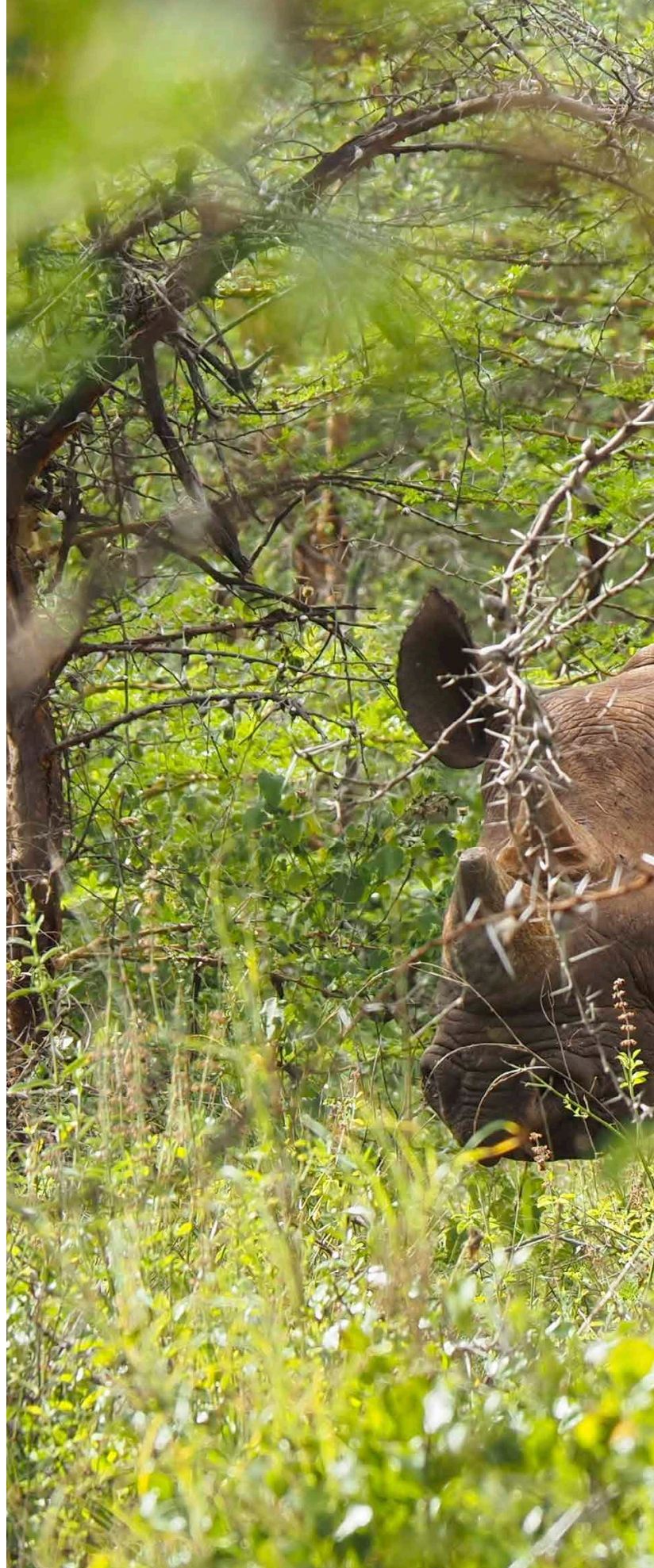
Experience rare encounters with black rhinos. Witness conservation in action in one of Tanzania's most protected sanctuaries. A quiet, powerful moment—where wilderness and hope meet.



View over Dindira Dam in Mkomazi National Park



Birding paradise in Mkomazi National Park



MKOMAZI

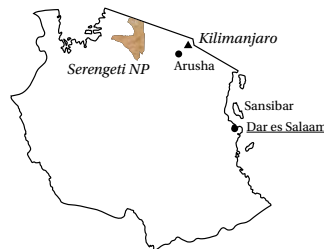


Rhino spotting from a 4x4 window seat—getting up close in the dense scrub of Mkomazi.



Comfortable tents with everything you need and nothing you don't!

SERENGETI



Serengeti View Camps

At night you can hear the cackle of the hyena.

Our SERENGETI VIEW CAMPS are located in two strategic areas within the Serengeti National Park, specially chosen to increase the chances of our visitors seeing the magnificent herds of wildebeest and zebra, especially when the routing and timing of the annual migration becomes unpredictable due to irregular weather patterns.

Serengeti View Camp – Rongai (South) is located in a pristine wilderness area near the Moru Kopjes, just south of Seronera in the Rongai region. Its strategic position provides convenient access to the short-grass plains stretching between Naabi Hill and Seronera, as well as the Western Corridor, making it an excellent base for game drives throughout the central Serengeti. Thanks to the nearby Mbalageti River, hippos are often seen in the vicinity, adding to the rich and varied wildlife experience that surrounds the camp.

CAMP ATMOSPHERE

DINING TENT



FIREPLACE





**TENTS WITH BEDS
(DOUBLE, TRIPLE,
QUADRUPLE)**



BATH AREA



LOUNGE AREA



Camp atmosphere

The camp features ten comfortable guest tents, complemented by a welcoming restaurant tent and a cozy lounge area—ideal for unwinding after an exciting day on safari. Each spacious tent is thoughtfully furnished with double, triple, or quadruple bed options, along with practical amenities such as a small desk, shelving, and a luggage rack, ensuring both comfort and functionality in a natural setting.

Serengeti View Camp – Togoro (North) is situated in the open plains near the Lobo Hills, in the northern reaches of the park. This area lies along the path of the great migration, where wildebeest and zebras traverse the landscape on their seasonal journey toward Kenya. Resi-

dent wildlife is equally impressive, with frequent sightings of lions, giraffes, topis, elephants, and many other species. Compared to more central areas of the Serengeti, Togoro remains less visited, offering a quieter and more exclusive safari atmosphere with uninterrupted views of the vast plains.

The camp's spacious tents are equipped with double or single beds, and family tents are also available for those traveling together. Each tent includes a private bathroom separated by a curtain and a terrace furnished with chairs and a small table—perfect for enjoying a peaceful sundowner while taking in the golden light over the endless savannah.

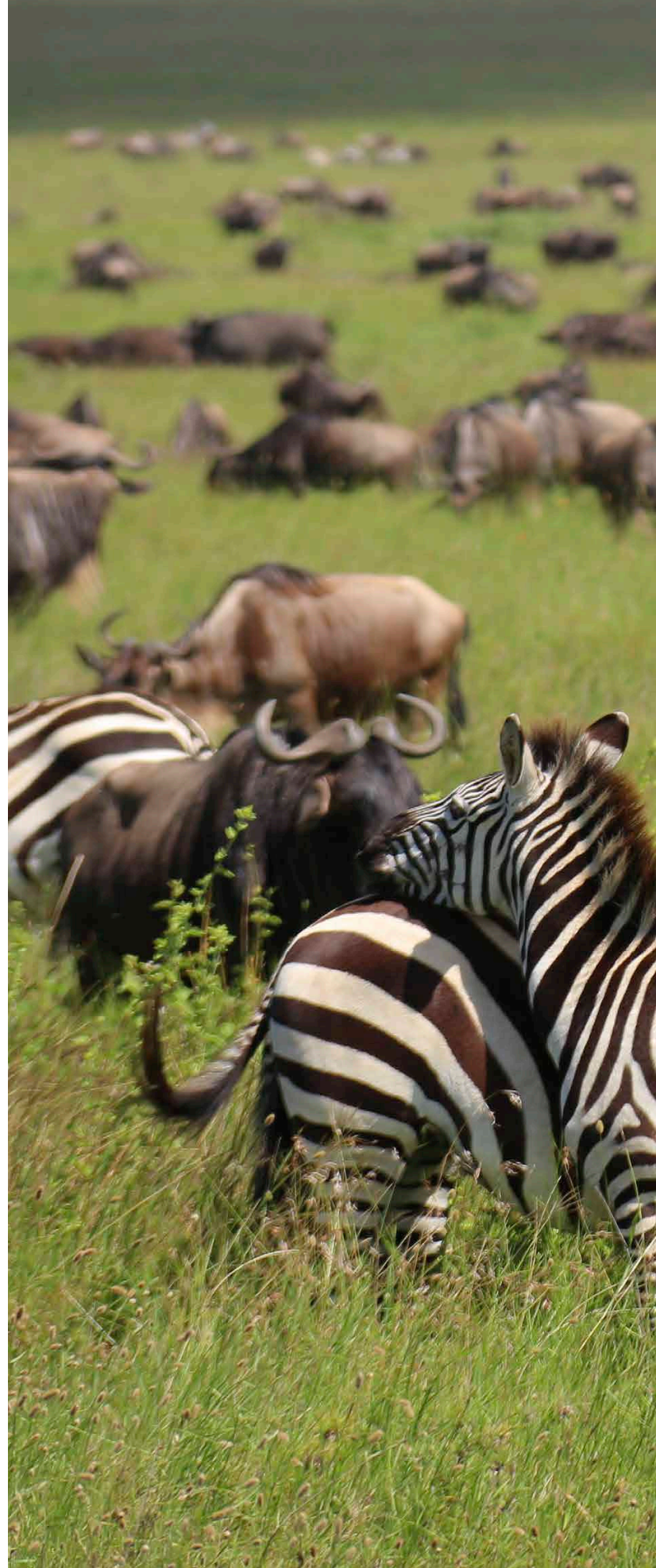
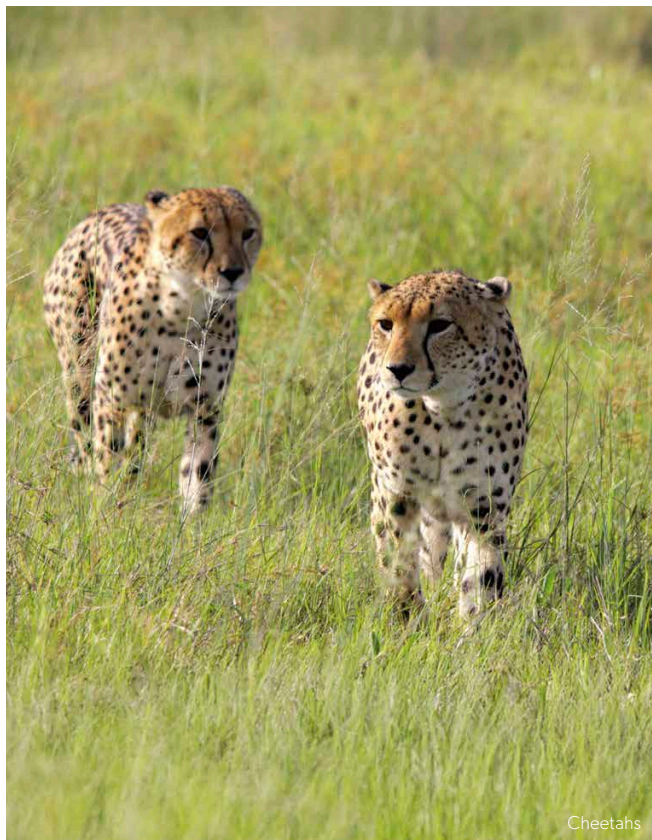
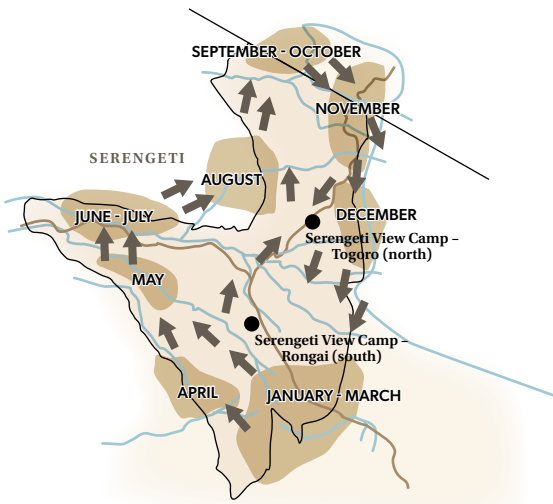
A pride of lions is sunbathing on the famous Serengeti kopjes, and we can quietly watch the scene from the safari vehicle



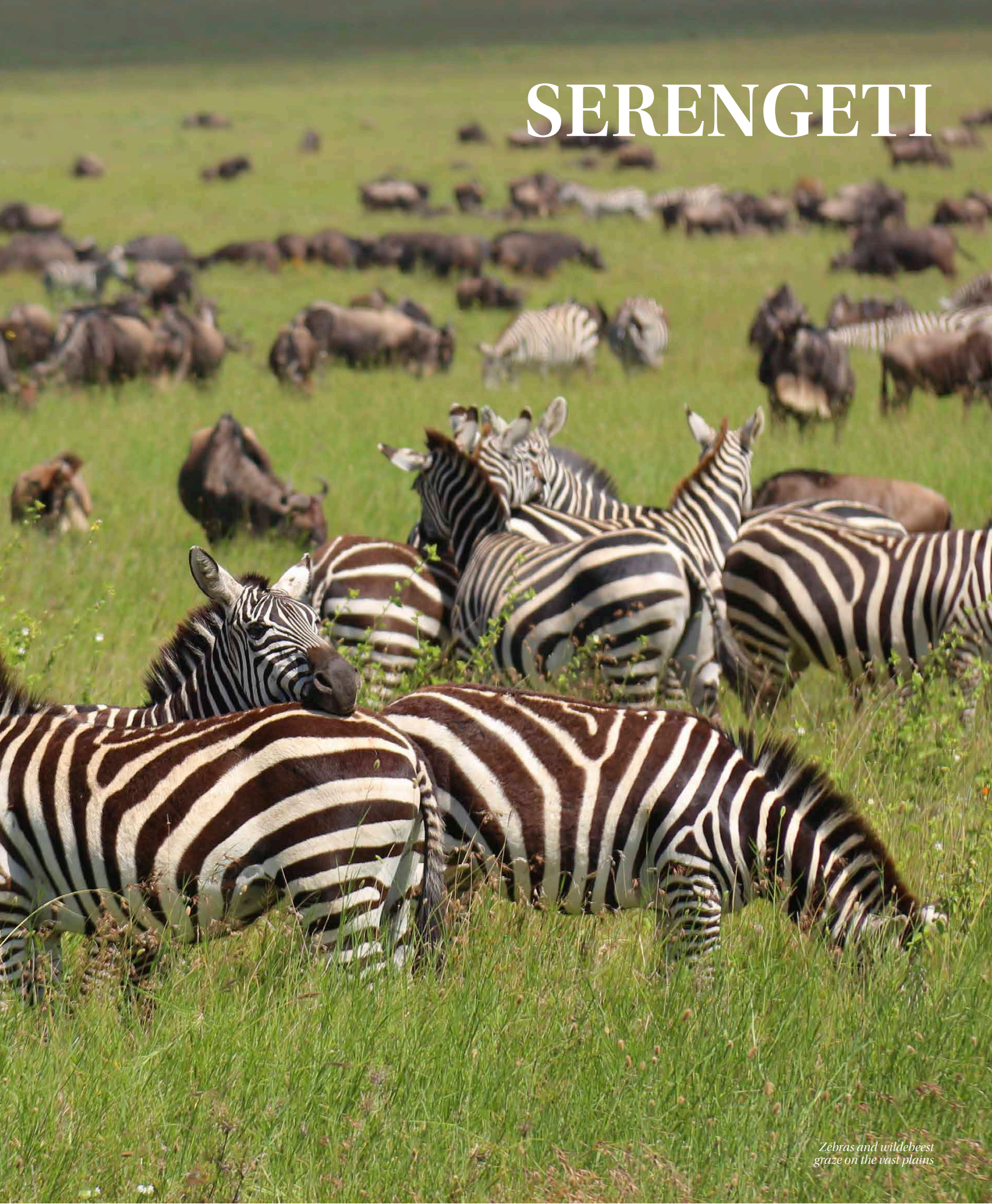
Animal observation

Great migration

Zebras and wildebeest on their annual migration through the Serengeti in search of water and grazing areas



SERENGETI



*Zebras and wildebeest
graze on the vast plains*



Covered dining area and terrace

Tarangire View *Tented Lodge*

Permanent tented lodge on top of a hill near Mpingo Ridge in Tarangire National Park

Tarangire View Tented Lodge offers a truly immersive safari experience within easy reach of Tarangire National Park. The lodge enjoys a panoramic position with sweeping views across the Tarangire River valley to the east and the dramatic kopjes to the west, placing guests right in the heart of one of Tanzania's most scenic landscapes.

This brand-new permanent tented lodge features 12 spacious, house-style tents designed to combine the authentic "bush feeling" with a high level of comfort and privacy. Each tent is thoughtfully furnished with elegant, locally inspired interiors. Alongside comfortable beds, guests will find a desk, shelving, and ample storage space for luggage, ensuring a practical yet stylish stay. The en-suite bathrooms are seamlessly integrated into the tents, while large private terraces with cozy couches and tables provide the perfect setting to relax and take in the surrounding wilderness.

Wildlife is an ever-present part of the experience. Resident animals such as elephants, waterbuck, lions, impalas, jackals, and leopards roam the area, often within view of the lodge. In the early mornings, the air is filled with the calls of diverse bird species, creating a natural soundtrack that enhances the sense of place.

Tarangire View Tented Lodge is more than just accommodation—it is a destination in itself. With its striking location, intimate atmosphere, and close connection to nature, it offers guests an unforgettable stay that blends adventure, tranquility, and comfort in one of Tanzania's most remarkable national parks.

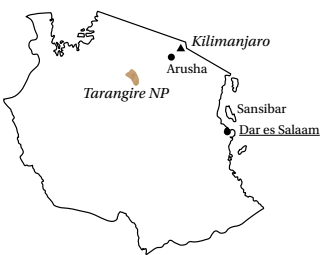


Fireplace with a view of the pool and the grounds

This camp represents the ultimate safari "bush feeling" as it offers a stunning location with more than just a touch of comfort and privacy in one of Tanzania's most scenically beautiful national parks.



Sundowner
at the top of the Lodge



After an eventful day on safari, the lodge's tents offer you a pleasant place to relax.



TARANGIRE



Stop in the middle of a herd of elephants



Karibu TANZANIA!

DEBBIE BACHMANN

The managing director and passionate mountaineer studied International Travel and Tourism in Cape Town and has worked as a tour guide in Southern and East Africa ever since. She held the women's world record in speed climbing Kilimanjaro for 4 years and has summited over 50 times! Benefit from her experience and the support of their well-organized mountain team, whether you want to climb Kilimanjaro, Mt Meru, Mt Kenya or Ol Donyo Lengai. She leads groups in English and German too.

HORST BACHMANN

Horst has spent half his life in Africa and knows the most beautiful landscapes between Nairobi and Cape Town. Before settling down with his family in Tanzania he regularly guided safari guests and mountaineers through the magnificent national parks and up the snow-capped Kilimanjaro. As the family grew, he took over African View Ltd.'s first lodge with his Zimbabwean wife, Debbie, in 2006. More tented camps were to follow. Horst's preferred mode of travel is a fly-in safari over the varied terrain of the Rift Valley to the vast savannah of the Serengeti, preferably in his own micro-light aircraft.





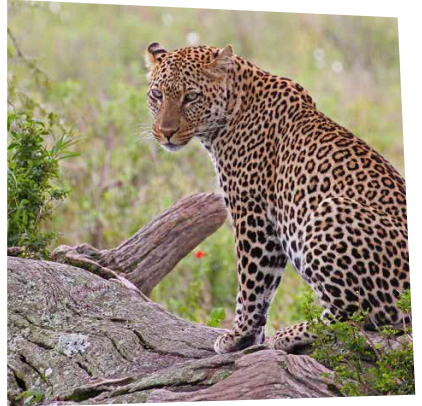
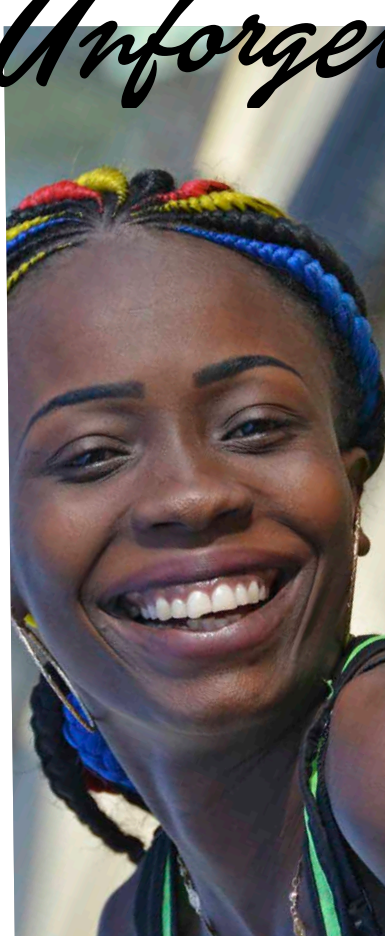
Guided *Tours & Trips*

KLILMANJARO · MT. MERU
ARUSHA · MKOMAZI
TARANGIRE · LAKE MANYARA
NGORONGORO
SERENGETI



TANZANIA

Unforgettable!



INSPIRE YOUR EXPLORATION

If you've visited us before, we would be delighted if you could rate us or simply share a comment or some pictures with us on your social media account. Thank you for your contribution!

Instagram: @african_view_tanzania
Facebook: @AfricanView



AFRICAN-VIEW.COM